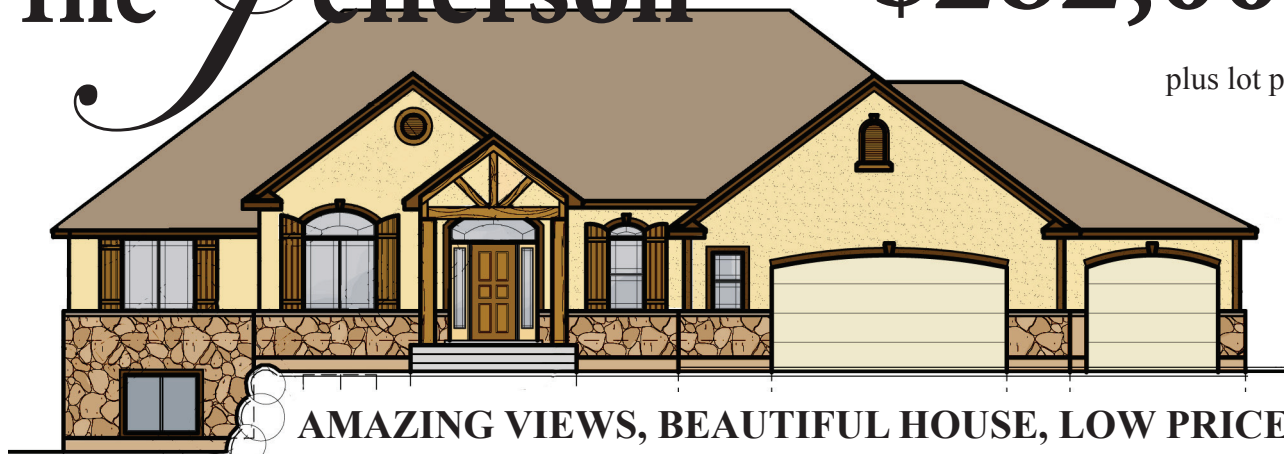


The Jefferson

\$282,000

plus lot price

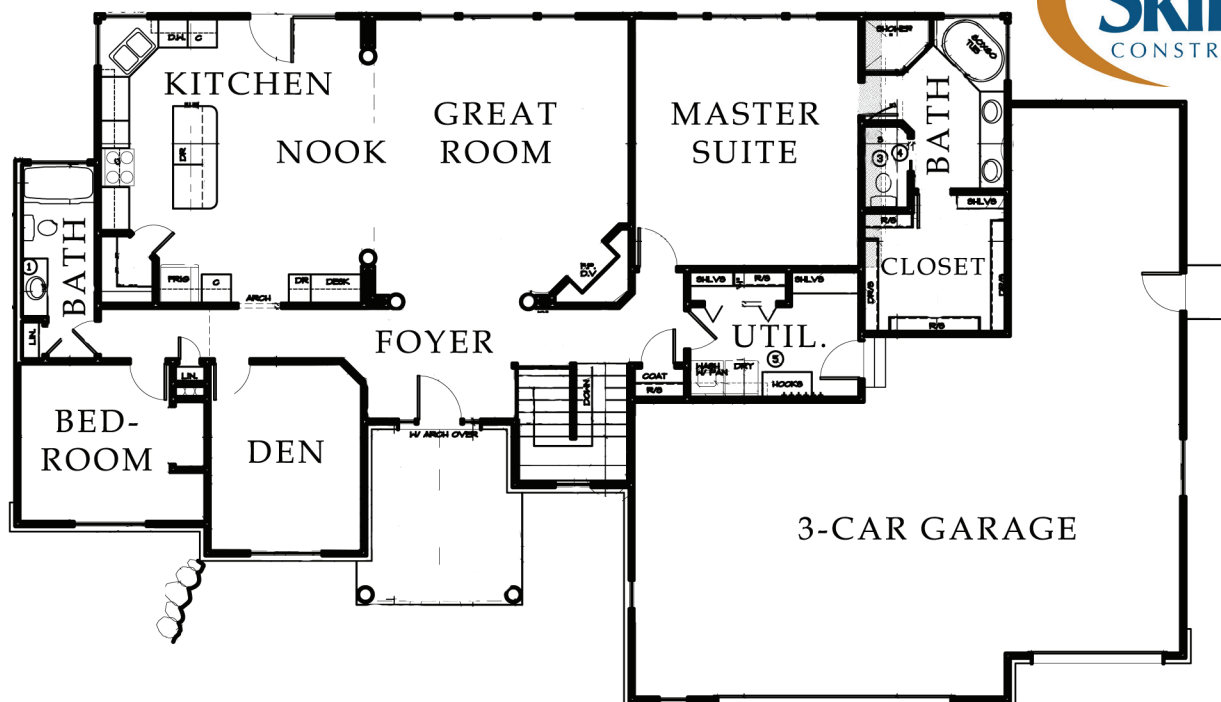


AMAZING VIEWS, BEAUTIFUL HOUSE, LOW PRICE

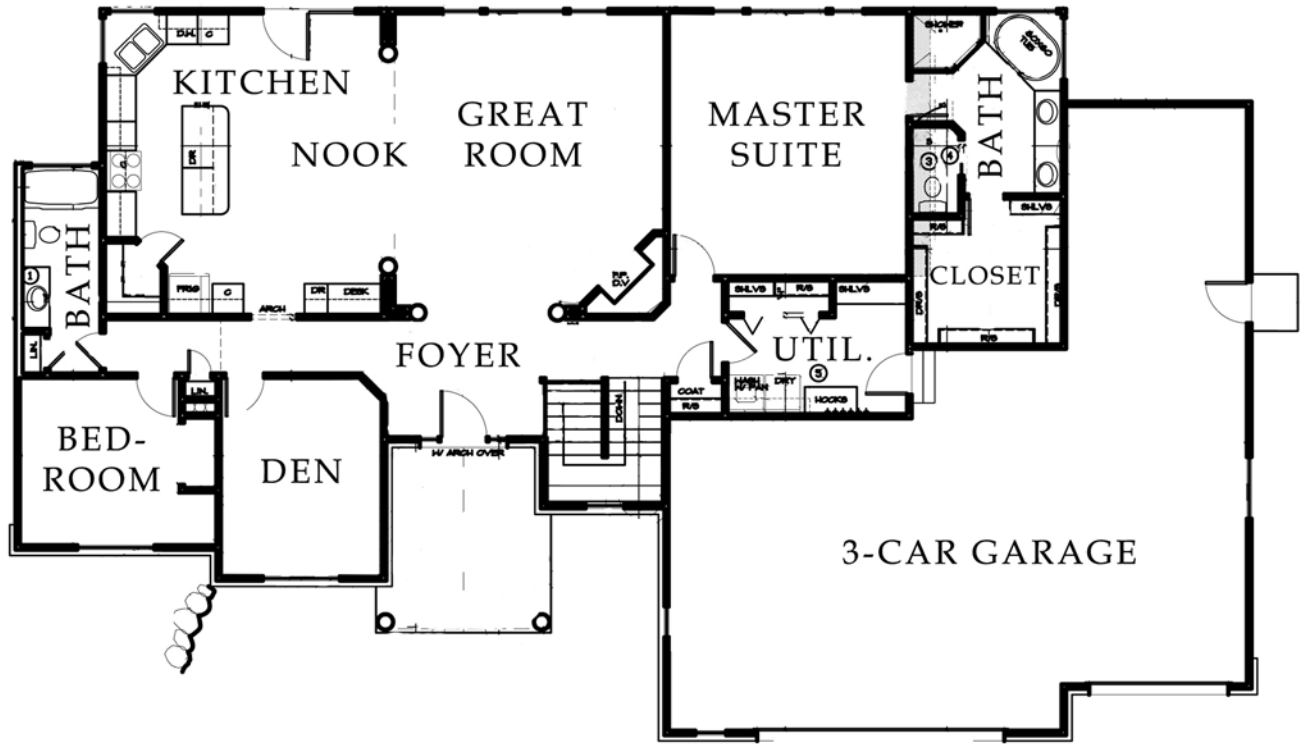
THE JEFFERSON FEATURES:

- 1,992 sq. ft. finished main floor
- 1,992 sq. ft. basement (unfinished)
- 3,984 sq. ft. total
- \$99.87 per square foot
- Amazing views
- Granite counter tops
- Vaulted ceilings
- Carpet and tile flooring
- Large master suite, with bath and walk-in closet
- Spacious 3-car garage with storage area
- Open great room/kitchen
- Tennis and swim club within walking distance
- Within 10 minutes to downtown SLC
- Breath-taking 360 degree views
- Nearby hiking and biking trails
- Prestigious neighborhood
- Near Eaglewood Golf Course
- Award-winning pre-schools - high schools
- Easy access to I-15 and I-215
- Great proximity to SLC Int. Airport
- Close to several medical facilities
- Unbelievable pricing

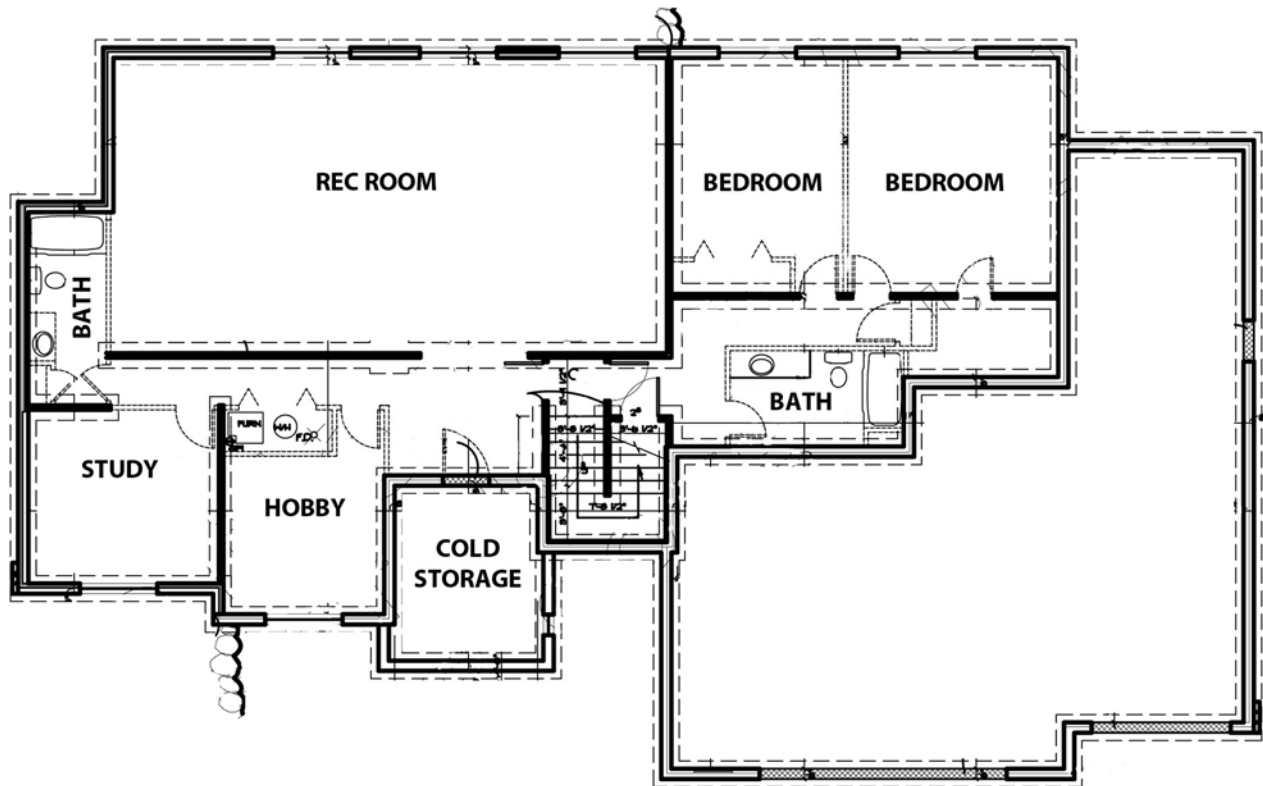
**HURRY. THIS IS AN AMAZING DEAL AND WON'T LAST LONG -
CALL SKILLCO AT 801-725-0181**



JEFFERSON FLOORPLAN



MAIN FLOOR



BASEMENT