

# The Monroe

# \$254,000

plus lot price



## THE MONROE FEATURES:

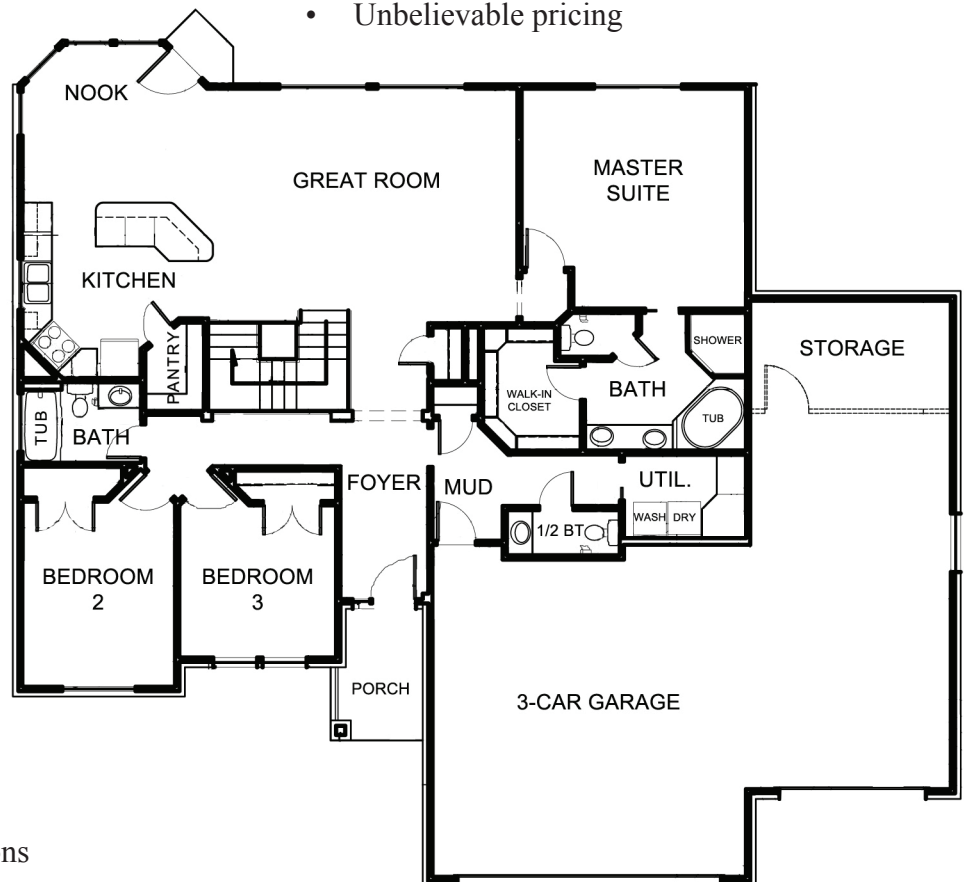
- 1,826 sq. ft. finished main floor
- 1,826 sq. ft. basement (unfinished)
- 3,652 sq. ft. total
- \$102.93 per square foot
- Amazing views
- Granite counter tops
- Vaulted ceilings
- Carpet and tile flooring
- Large master suite, with bath and walk-in closet
- Spacious 3-car garage with storage area
- Open great room/kitchen
- Tennis and swim club within walking distance
- Within 10 minutes to downtown SLC
- Breath-taking 360 degree views
- Nearby hiking and biking trails
- Prestigious neighborhood
- Near Eaglewood Golf Course
- Award-winning pre-schools - high schools
- Easy access to I-15 and I-215
- Great proximity to SLC Int. Airport
- Close to several medical facilities
- Unbelievable pricing

**AMAZING VIEWS,  
BEAUTIFUL HOUSE,  
LOW PRICE**



**HURRY. THIS IS AN  
AMAZING DEAL AND  
WON'T LAST LONG -**

**CALL SKILLCO AT  
801-725-0181**

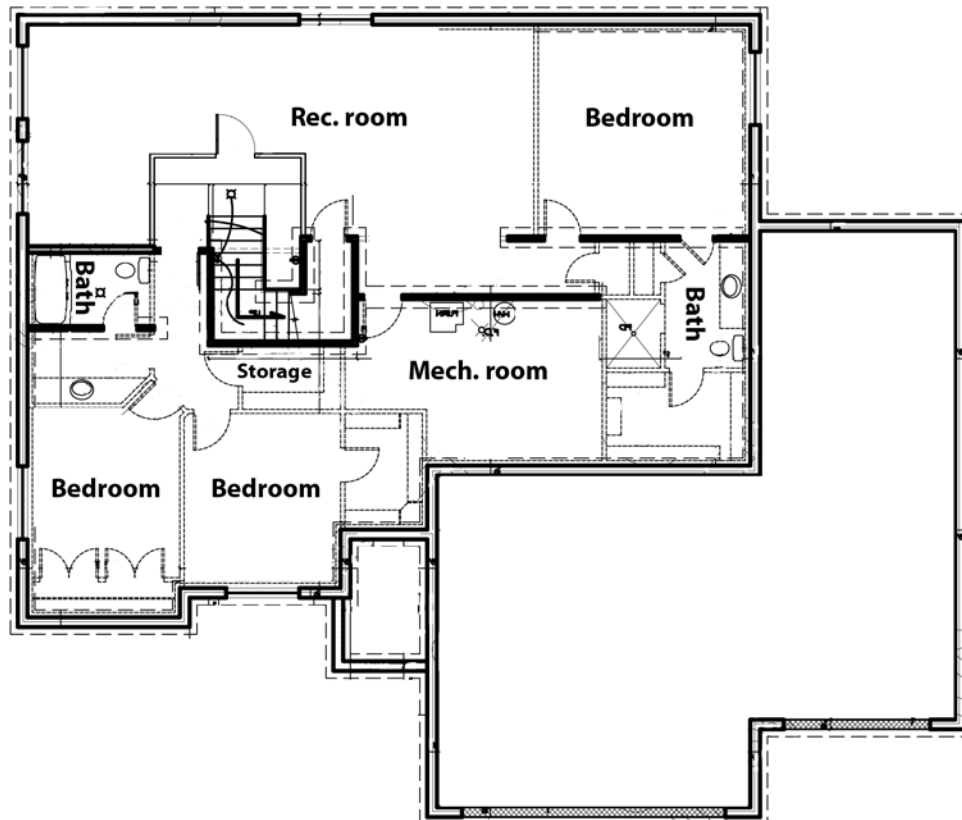


See reverse side for financing options

# MONROE FLOORPLAN



MAIN FLOOR



BASEMENT